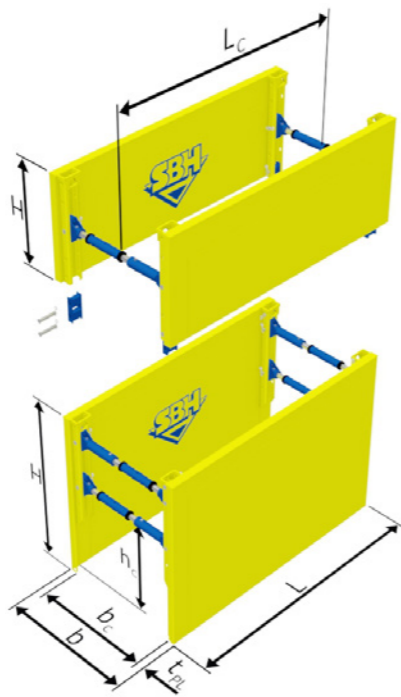


## STANDARD BOX 600 series



The robust, long-lasting Standard Box features a reinforced head, which can resist even the high loads when using the cut and lower method. At the same time, the reinforced cutting edge design enables even firm earth to be stripped away.

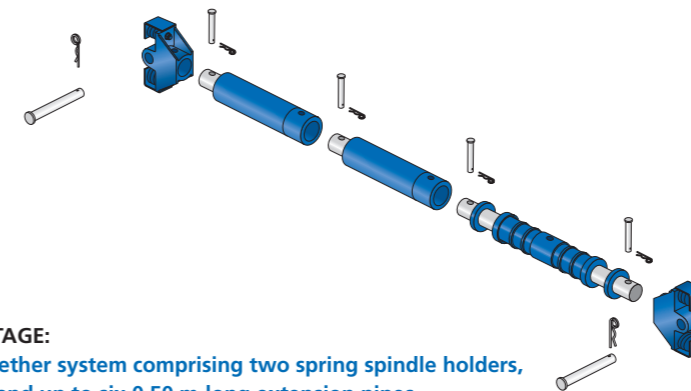
- ▶ Side parts with additional supports to minimise deformation
- ▶ Articulated spindles enable use with non-stable soils, using the cut and lower method

### PLATES $t_{PL} = 107.00 / 127.00$ mm

Plate length L [m]	Plate height H [m]	Thickness $t_{PL}$ [mm]	Pipe clearance length $L_c$ [m]	Pipe clearance height $h_c$ [m]	Permissible earth pres- sure [kN/m <sup>2</sup> ]	Calculated earth pressure $e_d$ / Characteristic system resistance $R_k$ [kN/m <sup>2</sup> ]	Weight per box [kg]
2.00	2.40	107.00	1.60	1.50	71.2	106.8	1495.0
	2.60						1580.0
	1.40						915.0
2.50	2.40	107.00	2.10	1.50	56.9	85.4	1725.0
	2.60						1820.0
	1.40						1060.0
3.00	2.40	107.00	2.60	1.50	47.5	71.3	1950.0
	2.60						2075.0
	1.40						1025.0
3.50	2.40	107.00	3.10	1.50	40.7	61.1	2180.0
	2.60						2320.0
	1.40						1350.0
3.70	2.40	107.00	3.30	1.50	38.5	57.8	2270.0
	2.60						2445.0
	1.40						1410.0
4.00	2.40	107.00	3.60	1.50	35.6	53.4	2400.0
	2.60						2560.0
	1.40						1495.0
4.50	2.40	127.00	4.10	1.50	33.7	50.6	2910.0
	2.60						3090.0
	1.40						1880.0
5.00	2.40	127.00	4.60	1.50	30.3	45.5	3160.0
	2.60						3360.0
	1.40						2050.0
5.50	2.40	127.00	5.10	1.50	27.6	41.4	3415.0
	2.60						3635.0
	1.40						2220.0
6.00	2.40	127.00	5.60	1.50	24.5	36.8	3670.0
	2.60						3910.0
	1.40						2390.0

Other lengths or custom variants upon request.

## SBH SPINDLE with slot-together extension pipes – for changing trench widths



**ADVANTAGE:**  
Slot-together system comprising two spring spindle holders, spindle and up to six 0.50 m-long extension pipes

SBH spindles are set to the required trench width by simply slotting and pinning together the extension pipes. Up to six extension pipes, each 0.50 m long, or extension pipes up to a total length of 3.00 m can be used as extensions. The extension pipes are available in lengths from 0.30 m to 2.00 m, and so can be combined to achieve your desired working width.

In traditional systems, the extension pipes have to be pinned together. That takes time and requires lots of bolts. But with SBH, you just slot the extension pipes together and pin them – and you are done. The articulated spring spindle holder creates the connection between the plates and the spindles. This makes it possible to alternately press the plates down using the cut and lower method.

### ACCESSORIES

You can find the accessory parts

- ▶ Spindle key
- ▶ Spindle adaptor
- ▶ Protective rail
- ▶ 4-fold chain with shortening system
- ▶ Connecting posts
- ▶ Protective driving cap

for the Standard Box 600 series on pages 88–91.

### SPINDLE TYPE 031/085 BLUE

Number of extension pipes each 0.50 m	Spindle length Working width $b_c$ [m]	Trench width	Trench width	Trench width	Permitted com- pressive force F [kN]	Weight total G [kg]
		$b$ [m]	$b$ [m]	$b$ [m]		
		Light Box	Standard Box	Manhole Box		
0	0.98 – 1.26	1.11 – 1.39	1.20 – 1.48	2.00 – 2.28	468.0	65.0
1	1.48 – 1.76	1.61 – 1.89	1.70 – 1.98	2.50 – 2.78	403.0	84.8
2	1.98 – 2.26	2.11 – 2.39	2.20 – 2.48	3.00 – 3.28	348.0	104.6
3	2.48 – 2.76	2.61 – 2.89	2.70 – 2.98	3.50 – 3.78	299.0	124.4
4	2.98 – 3.26	3.11 – 3.39	3.20 – 3.48	4.00 – 4.28	254.0	144.2
5	3.48 – 3.76	3.61 – 3.89	3.70 – 3.98	4.50 – 4.78	210.0	164.0
6	3.98 – 4.26	4.11 – 4.39	4.20 – 4.48	5.00 – 5.28	165.0	183.8